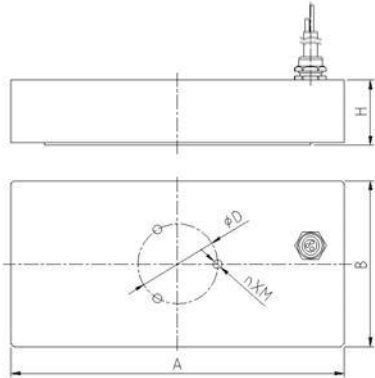




EP Magnets - Thin Steel Plate

This series of EP magnets are used for lifting a single piece of thin steel plate of 6mm thickness or below, without lifting the second piece of steel plate in the stack. These magnets can generate 12kg/cm² lifting force.



Model	Rated lifting capacity(kg)	Max. Pull-off strength(kg)	Overall dimension(mm)						Weight (Kg)
			A	B	H	D	n	M	
HEPMP-100B	100	600	350	106	49	45	3	6	15
HEPMP-200B	200	1200	350	162	49	45	3	6	22
HEPMP-300B	300	1850	500	162	49	45	3	6	30
HEPMP-500B	500	2800	500	218	49	60	3	10	40
HEPMP-600B	600	3700	650	218	49	60	3	10	50
HEPMP-800B	800	4650	500	330	49	80	4	12	60
HEPMP-1000B	1000	5600	650	302	49	80	4	12	75
HEPMP-1500B	1500	8400	950	302	49	100	4	16	105
HEPMP-2000B	2000	11200	950	386	49	100	4	16	145

Note:

1. Rated lifting capacity = the max. Pull-off strength at 1.0mm working air-gap/1.5